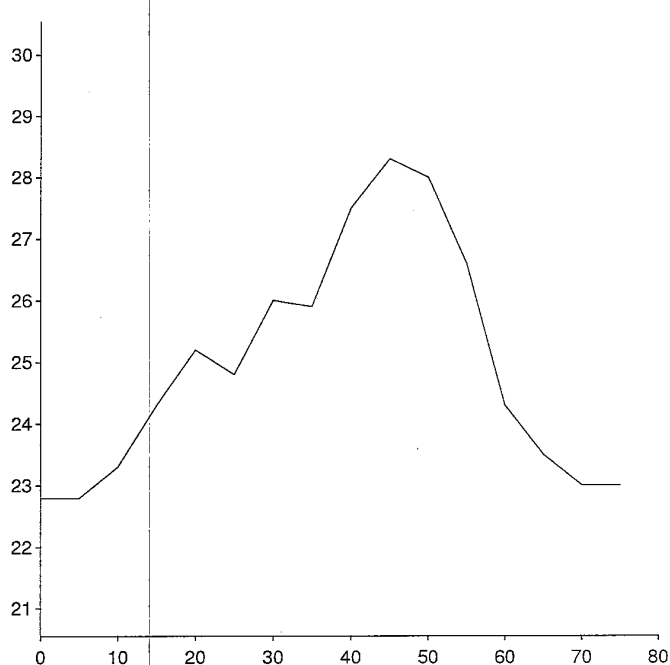
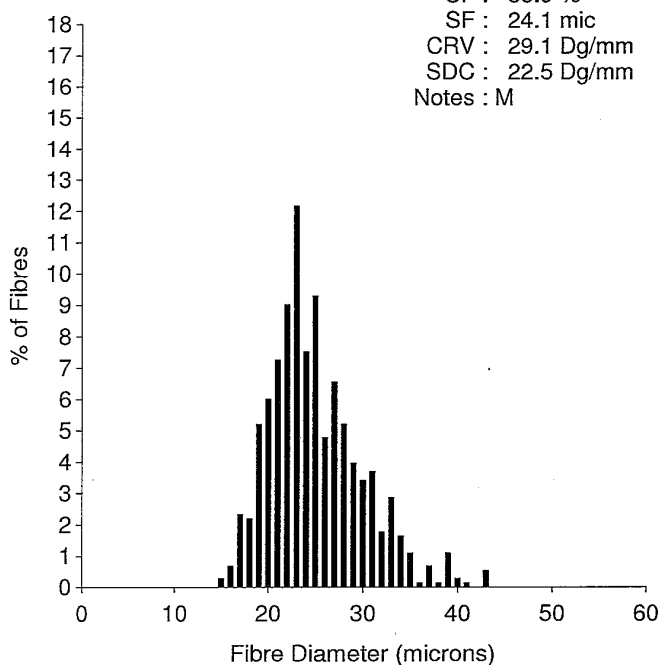


OFDA 2000 REPORT : SORTED BY EID/TAG

Samples 02/05/2019 (Trim High On) (153Records)

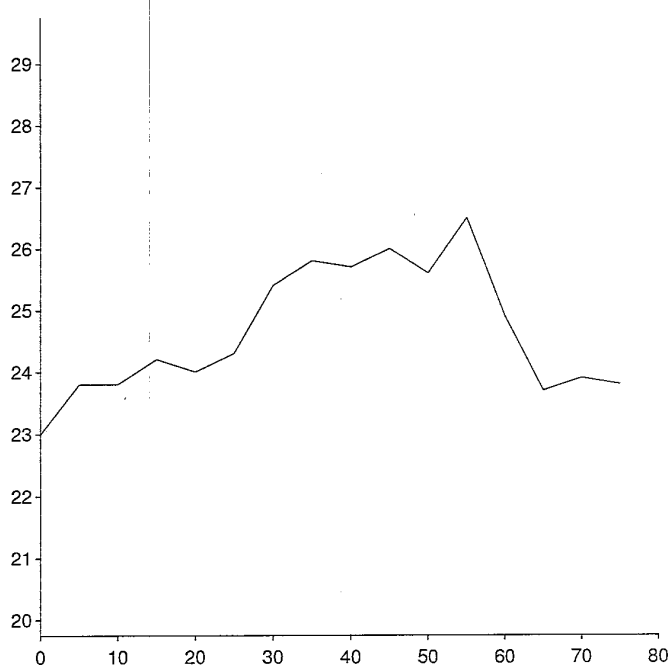
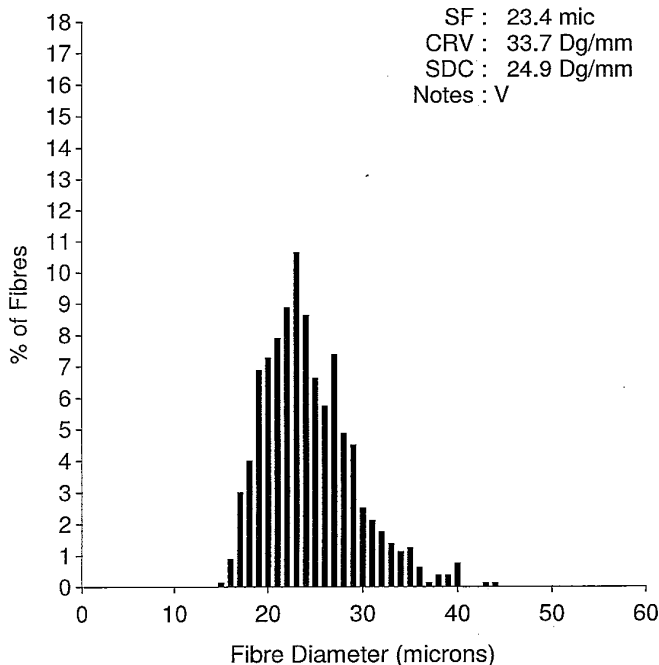
EID : BEAA
 EarTag : Kiki
 Micron : 25.0 mic
 SD : 4.9 mic
 CVD : 19.7 %
 CEM : 9.4 mic
 <15 : 0 %
 CF : 85.9 %
 SF : 24.1 mic
 CRV : 29.1 Dg/mm
 SDC : 22.5 Dg/mm
 Notes : M

Staple Len : 80.0 mm
 Min Mic : 22.8 mic
 Max Mic : 28.3 mic
 SD Along : 1.90 mic



EID : BEAA
 EarTag : Kiki
 Micron : 24.3 mic
 SD : 4.8 mic
 CVD : 19.6 %
 CEM : 9.6 mic
 <15 : 0 %
 CF : 89.9 %
 SF : 23.4 mic
 CRV : 33.7 Dg/mm
 SDC : 24.9 Dg/mm
 Notes : V

Staple Len : 80.0 mm
 Min Mic : 23.0 mic
 Max Mic : 26.5 mic
 SD Along : 1.00 mic



OFDA 2000 REPORT : SORTED BY EID/TAG

Samples 02/05/2019 (Trim High On) (153Records)

EID : BEAA
 EarTag : Kiki
 Micron : 23.7 mic
 SD : 4.5 mic
 CVD : 18.9 %
 CEM : 9.0 mic
 <15 : 0.2 %
 CF : 91.5 %
 SF : 22.7 mic
 CRV : 34.7 Dg/mm
 SDC : 24.8 Dg/mm
 Notes : H

Staple Len : 80.0 mm
 Min Mic : 22.2 mic
 Max Mic : 26.5 mic
 SD Along : 1.40 mic

